

REFER TO FOODSERVICE DESIGN PROFESSIONALS SPECIFICATIONS AND SUBSEQUENT SHEETS FOR ADDITIONAL COORDINATION INFORMATION

CRITICAL NOTES:

- CONTRACTOR MUST COORDINATE AND VERIFY ALL DIMENSIONS WITH FOOD SERVICE EQUIPMENT SHOP DRAWINGS AND MANUFACTURER'S DATA. DIMENSIONS SHOWN ARE FOR DESIGN AND BIDDING PURPOSES ONLY.
- PIPING AND DRAINAGE SYSTEMS (SANITARY AND GREASE-LADEN). SYSTEMS MUST BE CLEANED AND FLUSHED BEFORE THE FINAL CONNECTION WITH FOOD SERVICE EQUIPMENT - CRITICAL (DIV. 22).

6 CRITICAL NOTES NOT TO SCALE

GENERAL CONTRACTOR RESPONSIBLE FOR BUT NOT LIMITED TO:

- ANY WALL PENETRATION REQUIRED FOR FOOD SERVICE EQUIPMENT UTILITIES. ESCUTCHEON PLATES OR S/S SLEEVES TO BE PROVIDED AND INSTALLED AS NEEDED.
- FURNISH AND INSTALL 3/4" PLYWOOD BLOCKING IN THE WALL FOR MOUNTING EQUIPMENT FURNISHED BY SECTION 11 40 00 AS REQUIRED.

5 GENERAL CONTRACTOR COORDINATION NOTES NOT TO SCALE

DIVISION 22 (PLUMBING) RESPONSIBLE FOR BUT NOT LIMITED TO:

- DO NOT ROUGH-IN FROM FDP DRAWINGS. REFER TO THE KITCHEN EQUIPMENT CONTRACTOR'S DIMENSIONED SHOP DRAWINGS. DIMENSIONS INDICATED ARE TO BE VERIFIED BY KITCHEN EQUIPMENT CONTRACTOR AND ADJUSTED AS REQUIRED BY EQUIPMENT AND/OR FIELD CONDITIONS.**
- SECTION 11 40 00 TO VERIFY UTILITY REQUIREMENTS OF ANY EXISTING EQUIPMENT.
- ALL CONNECTIONS SHALL BE MADE IN ACCORDANCE WITH LOCAL CODES AND NATIONAL STANDARDS, EXCEPT WHERE PLANS AND SPECIFICATIONS EXCEED THOSE CODES AND STANDARDS.
- VERIFY ALL PLUMBING REQUIREMENTS WITH ENGINEERING DRAWINGS.
- ROUGH-IN AND FINAL PLUMBING CONNECTIONS TO FOOD SERVICE EQUIPMENT AND BETWEEN COMPONENTS (INCLUDING MATERIALS AND LABOR). ACCESSORIES PROVIDED LOOSE WITH FOOD SERVICE EQUIPMENT BY SECTION 11 40 00 TO BE FIELD INSTALLED BY DIVISION 22. THIS INCLUDES BUT IS NOT LIMITED TO INSTALLATION OF ALL FAUCETS (WATER FILL FAUCETS, PRE-RINSE FAUCETS, ETC.), HOSES, GAS DISCONNECTS, AND DRAINS FROM EQUIPMENT POINT OF CONNECTION TO BUILDING PLUMBING SYSTEMS. ALL DRAIN LINES ARE PROVIDED AND INSTALLED BY DIV. 22.

- KITCHEN EQUIPMENT CONTRACTOR IS RESPONSIBLE FOR PROVIDING ALL FAUCETS (WATER FILL FAUCETS, PRE-RINSE FAUCETS, ETC.), DRAIN FITTINGS, MIXING VALVES, CONTROL VALVES, WATER PRESSURE REGULATORS, VACUUM BREAKERS, AND ALL ACCESSORIES FOR EQUIPMENT SPECIFIED UNDER 11 40 00. DIVISION 22 IS RESPONSIBLE FOR INSTALLATION.
- INDIRECT DRAIN LINE RUNS FROM EQUIPMENT TO NEAREST DRAIN OR FLOOR SINK. LINES TO BE TYPE "K" COPPER.
- IF ANY PLUMBING ACCESSORIES OR FITTINGS ARE PROVIDED LOOSE WITH EQUIPMENT BY 11 40 00, DIV. 22 IS TO ATTACH TO EQUIPMENT AND PROVIDE FINAL CONNECTION.
- GAS SUPPLY SYSTEMS WITH ALL COMPONENTS AND FITTINGS AS REQUIRED FOR A COMPLETE SYSTEM.
- WATER SUPPLY SYSTEMS WITH ALL COMPONENTS AND FITTINGS AS REQUIRED FOR A COMPLETE SYSTEM.
- COMPRESSED AIR SYSTEMS WITH ALL COMPONENTS AND FITTINGS AS REQUIRED FOR A COMPLETE SYSTEM (IF REQUIRED FOR THIS PROJECT).
- PIPING AND DRAINAGE SYSTEMS (SANITARY AND GREASE-LADEN). SYSTEMS MUST BE CLEANED AND FLUSHED BEFORE THE FINAL CONNECTION WITH FOOD SERVICE EQUIPMENT - CRITICAL.
- FLOOR SINKS (PROVIDE AND INSTALL). FLANGE AND GRATES TO BE FLUSH WITH FINISHED FLOOR.

- FLOOR DRAINS (PROVIDE AND INSTALL). FLANGE AND GRATES TO BE FLUSH WITH FINISHED FLOOR.
- GREASE TRAPS AS REQUIRED. VERIFY WITH LOCAL CODES TO BYPASS OR PIPE THRU GREASE TRAP AND/OR INTERCEPTOR.
- P-TRAPS AS REQUIRED (INCLUDING ALL DISPOSERS).
- SAFETY RESTRAINT CABLE INSTALLATION (SAFETY RESTRAINT CABLE PROVIDED BY 11 40 00).
- SPECIFIED COUPLINGS AND PIPING TO ALL EQUIPMENT FURNISHED BY 11 40 00.
- AIR COMPRESSORS (IF REQUIRED FOR THIS PROJECT) (SIZE, PROVIDE, AND INSTALL, UNLESS OTHERWISE SPECIFIED).
- PRESSURE BOILERS (IF REQUIRED FOR THIS PROJECT) (SIZE, PROVIDE, AND INSTALL, UNLESS OTHERWISE SPECIFIED).
- UNIONS AT DISPOSER SOLENOID VALVES (IF DISPOSER IS PROVIDED IN THIS PROJECT) (PROVIDE AND INSTALL).
- BACK FLOW PREVENTION AS REQUIRED (PROVIDE AND INSTALL - INCLUDING ALL DISPOSERS). BACK-SIPHONAGE SHALL BE INSTALLED AT ALL FIXTURES AND EQUIPMENT WHERE BACKFLOW AND/OR BACK-SIPHONAGE MAY OCCUR AND WHERE A MINIMUM AIR GAP CANNOT BE PROVIDED BETWEEN THE WATER TO THE FIXTURE OR EQUIPMENT AT ITS FLOOD/LEVEL RIM. VACUUM BREAKERS, WHEN FURNISHED WITH EQUIPMENT, SHALL OVERRIDE THE ABOVE, IF ACCEPTABLE WITH APPLICABLE CODES. DIVISION 22 RESPONSIBLE FOR VERIFYING REQUIREMENT WITH LOCAL CODES.

- EXHAUST HOOD CONDENSATE DRAIN CONNECTIONS (IF EXHAUST HOOD IS PROVIDED IN THIS PROJECT) (PROVIDE AND INSTALL).
- INTERCONNECTION OF 1/2" CW TO PRE-RINSE AND DISPOSERS CONE/BODY INLETS PIPED THROUGH SOLENOID AND VACUUM BREAKER (IF DISPOSER IS PROVIDED IN THIS PROJECT).
- FIRE SYSTEM PIPING. EXPOSED PIPING TO BE CHROME PLATED.
- PIPE 1/2" COLD WATER TO SWIRL INLETS AT DISPOSERS (IF DISPOSER IS PROVIDED IN THIS PROJECT).

NOTE: WATER AND DRAIN CONNECTIONS INDICATED ARE THOSE REQUIRED FOR THE FOOD SERVICE EQUIPMENT AND THOSE REQUIRED FOR SUPPORT EQUIPMENT FURNISHED BY DIVISION 22. FOR ADDITIONAL WATER AND DRAIN REQUIREMENTS REFER TO MECHANICAL DRAWINGS.

NOTE: REFER TO ELECTRICAL/MECHANICAL DRAWINGS FOR REQUIREMENTS OF EXHAUST FANS AND MAKE-UP AIR HANDLERS AND LOCATION OF AN INTERLOCK AND START/STOP CONTROLS TO BE LOCATED WITHIN FOOD SERVICE AREA BY DIVISION 26.

4 PLUMBING COORDINATION NOTES NOT TO SCALE

DIVISION 23 (MECHANICAL) RESPONSIBLE FOR BUT NOT LIMITED TO:

- DO NOT ROUGH-IN FROM FDP DRAWINGS. REFER TO THE KITCHEN EQUIPMENT CONTRACTOR'S DIMENSIONED SHOP DRAWINGS. DIMENSIONS INDICATED ARE TO BE VERIFIED BY KITCHEN EQUIPMENT CONTRACTOR AND ADJUSTED AS REQUIRED BY EQUIPMENT AND/OR FIELD CONDITIONS.**
- SECTION 11 40 00 TO VERIFY UTILITY REQUIREMENTS OF ANY EXISTING EQUIPMENT.
- ALL CONNECTIONS SHALL BE MADE FOLLOWING LOCAL CODES AND NATIONAL STANDARDS, EXCEPT WHERE PLANS AND SPECIFICATIONS EXCEED THOSE CODES AND STANDARDS.
- VERIFY ALL MECHANICAL REQUIREMENTS WITH ENGINEERING DRAWINGS.
- ROUGH-IN AND FINAL CONNECTION OF MECHANICAL SYSTEMS TO FOOD SERVICE EQUIPMENT, WALK-IN ASSEMBLIES, AND BETWEEN COMPONENTS (INCLUDING MATERIALS AND LABOR).
- TESTING AND BALANCING FOR ROOMS AND EXHAUST HOODS TO BE PERFORMED BY MECHANICAL CONTRACTOR. BALANCE REPORT FOR FOOD SERVICE EXHAUST HOODS TO BE PROVIDED TO FOODSERVICE DESIGN PROFESSIONALS (FDP) IMMEDIATELY UPON COMPLETION (SEND TO HOUSTON.SUBMITTAL@FDP.ORG FOR HOUSTON OFFICE AND DALLAS.SUBMITTAL@FDP.ORG FOR DALLAS OFFICE) AND MUST BE SUBMITTED WITH O&M MANUALS.

- EXHAUST HOODS, CONDENSATE HOODS, FIRE SUPPRESSION SYSTEMS, CONNECTIONS AND CONTROLS (PROVIDE AND INSTALL - UNLESS OTHERWISE SPECIFIED), PROVIDE TEMPERED AIR AT ALL SUPPLY DUCTS.
 - IF EXHAUST/CONDENSATE HOODS AND FIRE SUPPRESSION SYSTEMS ARE SPECIFIED UNDER SECTION 11 40 00, DIVISION 23 IS RESPONSIBLE FOR ALL EXHAUST AND CONDENSATE HOOD CONNECTIONS (PROVIDE AND INSTALL).
- VFD SYSTEM AND CONTROLLERS, WHEN REQUIRED BY CODE (PROVIDE AND INSTALL).
- PROVIDE AND INSTALL ALL VENTILATION (DIRECT OR INDIRECT), AIR CONDITIONING AND HEATING SYSTEMS (UNLESS OTHERWISE SPECIFIED).
- COORDINATE SUPPLY AND RETURN DUCTS ABOVE SERVING COUNTERS OR OPEN-AIR REFRIGERATED MERCHANDISERS. NO COLD AIR TO BLOW DIRECTLY ON HOT FOOD COUNTERS.
- COORDINATE SUPPLY AND RETURN DUCTS AWAY FROM EQUIPMENT WITH TOP MOUNTED REFRIGERATION. NO COLD AIR TO BLOW DIRECTLY ON COMPRESSORS.
- MECHANICAL CONTRACTOR TO LOCATE TEMPERATURE MONITORS WITHIN RETURN DUCTS.

1 MECHANICAL COORDINATION NOTES NOT TO SCALE

DIVISION 26 (ELECTRICAL) IS RESPONSIBLE FOR BUT NOT LIMITED TO:

- DO NOT ROUGH IN FROM FDP DRAWINGS. REFER TO THE KITCHEN EQUIPMENT CONTRACTOR'S DIMENSIONED SHOP DRAWINGS. DIMENSIONS INDICATED ARE TO BE VERIFIED BY KITCHEN EQUIPMENT CONTRACTOR AND ADJUSTED AS REQUIRED BY EQUIPMENT AND FIELD CONDITIONS.**
- SECTION 11 40 00 TO VERIFY UTILITY REQUIREMENTS OF ANY EXISTING EQUIPMENT.
- ALL CONNECTIONS SHALL BE MADE FOLLOWING LOCAL CODES AND NATIONAL STANDARDS, EXCEPT WHERE PLANS AND SPECIFICATIONS EXCEED THOSE CODES AND STANDARDS.
- VERIFY ALL ELECTRICAL REQUIREMENTS WITH ENGINEERING DRAWINGS.
- ROUGH-IN AND FINAL CONNECTION OF ELECTRICAL SYSTEMS TO FOOD SERVICE EQUIPMENT, WALK-IN ASSEMBLIES, AND BETWEEN COMPONENTS (INCLUDING MATERIALS AND LABOR). ACCESSORIES PROVIDED LOOSE WITH FOOD SERVICE EQUIPMENT BY SECTION 11 40 00 TO BE FIELD INSTALLED BY DIVISION 26.

- EMPTY EMT CONDUIT WITH PULL-WIRE AND WIDE-SWEEP BENDS FOR FIRE SUPPRESSION SYSTEMS. INTERCONNECT FIRE PROTECTION SYSTEM TO PANEL BOX SHUNT TRIPS AND BUILDING ALARM.
- TABLE LIMIT SWITCH INSTALLATION (PROVIDED LOOSE BY SECTION 11 40 00) (IF DISHMACHINE IS PROVIDED IN THIS PROJECT).
- ELECTRICAL MATERIALS AND DEVICES (SHUNT-TRIP BREAKERS, SURGE PROTECTORS, LIGHTING CONTROL DEVICES, CONDUIT, WIRE, ETC.).
- SWITCHES AND STAINLESS STEEL DISCONNECTS AS REQUIRED (PROVIDE, LOCATE, AND INSTALL - TO BE IN AN ACCESSIBLE LOCATION).
- CHARGING STATIONS FOR FORKLIFTS, PALLET STACKERS, AND PALLET JACKS (SIZE, PROVIDE, LOCATE, AND INSTALL) (IF EQUIPMENT IS PROVIDED IN THIS PROJECT).
- INTERCONNECTION BETWEEN CONDENSATE FAN AND DISHMACHINE CONTROL PANEL (IF EQUIPMENT IS PROVIDED IN THIS PROJECT).
- INTERCONNECTION BETWEEN EXHAUST HOOD FANS AND SWITCH (IF EQUIPMENT IS PROVIDED IN THIS PROJECT).
- INTERCONNECTION BETWEEN EXHAUST HOOD LIGHTS AND SWITCH (IF EQUIPMENT IS PROVIDED IN THIS PROJECT).
- IF ANY ELECTRICAL ACCESSORIES, FITTINGS, AND CORD/PLUGS ARE PROVIDED LOOSE WITH EQUIPMENT BY 11 40 00, DIV.26 IS TO ATTACH TO EQUIPMENT AND PROVIDE FINAL CONNECTION.

- PROVIDE WATERPROOF RECEPTACLES IN WET AREAS.
- ALL ELECTRICAL CONNECTIONS BENEATH EXHAUST HOODS (IF EQUIPMENT IS PROVIDED IN THIS PROJECT) TO EXTEND TO SHUNT TRIP BREAKERS WITH ELECTRICAL PANEL BOX FOR SHUTDOWN DURING FIRE MODE.
- RECEPTACLES ARE TO BE PRE-WIRED TO THE JUNCTION BOX OR LOAD CENTER FOR FINAL CONNECTION BY DIVISION 26.
- ALL ELECTRICAL LIGHTING, POWER, AND DISTRIBUTION SYSTEMS.
- DO NOT INTERCONNECT MORE THAN THREE (3) CONVENIENCE OUTLETS ON ONE (1) BREAKER.
- OTHER THAN CONVENIENCE OUTLETS, ALL ELECTRICAL CONNECTIONS SHOWN ON FOOD SERVICE PLANS ARE DEDICATED BREAKERS.
- DOORBELL AT RECEIVING DOOR (PROVIDE AND INSTALL - TO BE AUDIBLE THROUGHOUT KITCHEN, OFFICE, AND DRY STORAGE ROOM).
- ADEQUATE LIGHTING AT RECEIVING DOOR.

NOTE: ELECTRICAL CONNECTIONS INDICATED ARE THOSE REQUIRED FOR THE FOOD SERVICE EQUIPMENT AND THOSE REQUIRED FOR SUPPORT EQUIPMENT FURNISHED BY DIVISION 26. FOR ADDITIONAL REQUIREMENTS, REFER TO THE ELECTRICAL ENGINEER'S DRAWINGS.

7 ELECTRICAL COORDINATION NOTES NOT TO SCALE

HEALTH DEPARTMENT REQUIREMENTS (VERIFY WITH LOCAL JURISDICTIONS):

- CEILING: LAY-IN TILES. CEILING TILES TO BE SMOOTH, IMPERVIOUS, AND EASILY CLEANABLE.
- LAVATORIES: WALL HUNG LAVATORIES LOCATED WITHIN ALL FUNCTIONAL WORKING AREAS.
- UTENSIL CLEANING/SANITIZING: ACCOMPLISHED IN UTENSIL WASH AREA WITH (3) 2'-0" x 2'-2" x 15" MINIMUM DEEP SINKS AND WAREWASH MACHINE.
- MECHANICAL CLEANING/SANITIZING OF TABLEWARE: ACCOMPLISHED BY WAREWASH MACHINE.
- GREASE TRAP: LOCATED AT EXTERIOR OF BUILDING. REFER TO ENGINEER'S DRAWINGS.
- FOOD SERVICE EQUIPMENT: ALL FLOOR-MOUNTED EQUIPMENT IS TO BE SEALED TO THE FLOOR TO PROVIDE AN EASILY CLEANABLE SURFACE AND PREVENT SEEPAGE. EQUIPMENT NOT MOUNTED TO THE FLOOR IS TO BE WALL MOUNTED ON WALL CARRIERS, OR ELEVATED ON LEGS TO PROVIDE AT LEAST A SIX-INCH CLEARANCE BETWEEN FLOOR AND EQUIPMENT.
- EXHAUST HOODS: EXHAUST HOODS PROVIDED OVER COOKING EQUIPMENT WITH LIQUID CHEMICAL ANSUL FIRE EXTINGUISHING SYSTEM.
- POISONOUS AND TOXIC MATERIAL STORAGE: LOCATED IN RESPECTIVE JANITOR CLOSETS WITH LOCKING HARDWARE.

2 HEALTH DEPARTMENT COORDINATION NOTES NOT TO SCALE

EXISTING EQUIPMENT NOTES (IF EXISTING EQUIPMENT IS PROVIDED IN THIS PROJECT):

- EXISTING EQUIPMENT NOT SCHEDULED FOR RE-USE TO BE RELOCATED BY THE K.E.C. COORDINATE WITH OWNER FOR NEW LOCATION.
- ALL UTILITIES NOT SCHEDULED FOR RE-USE TO BE CAPPED & COVERED BY REQUIRED DISCIPLINE.
- K.E.C. TO VERIFY ALL EXISTING UTILITY LOCATIONS & COORDINATE WITH ALL EQUIPMENT AS REQUIRED.

3 EXISTING EQUIPMENT NOTES NOT TO SCALE

THIS DOCUMENT, AND THE IDEAS AND DESIGN INCORPORATED HEREIN, AS AN INSTRUMENT OF PROFESSIONAL SERVICE IS THE PROPERTY OF THE ARCHITECT AND IS NOT TO BE USED IN WHOLE OR IN PART FOR ANY OTHER PROJECT, WITHOUT THE WRITTEN AUTHORIZATION OF THE LABCHE ARCHITECTURAL GROUP, INC.

DATE SIGNED: 12.31.2024
REGISTRATION EXPIRATION DATE:

7989 GLADYS AVENUE - SUITE 01
BEAUMONT, TEXAS 77706
PHONE (409) 860-0187
FAX (409) 860-0189
WWW.LABCHE.COM

THE LABCHE ARCHITECTURAL GROUP, INC.

DISHWASH PROGRAM INSTALLATION
SOUR LAKE ELEMENTARY
SOUR LAKE, TEXAS 75488
HARRISON JEFFERSON BLDG

SET NO.

SHEET NUMBER
QF1
FS GENERAL COORDINATION NOTES
FILENAME

DRAWN BY: [Signature]
PROJECT NUMBER: 2303005
DOCUMENT RELEASE DATES:
1 2/24/2025 - 75% CLIENT REVIEW
2 2/24/2025 - 90% CLIENT REVIEW
3 2/24/2025 - BIDS & CONSTRUCTION
4
5
6
7
8
9
COPYRIGHT © 2024 THE LABCHE ARCHITECTURAL GROUP, INC.

THIS DOCUMENT, AND THE IDEAS AND DESIGN INCORPORATED HEREIN, AS AN INSTRUMENT OF PROFESSIONAL SERVICE IS THE PROPERTY OF THE ARCHITECT AND IS NOT TO BE USED IN WHOLE OR IN PART FOR ANY OTHER PROJECT, WITHOUT THE WRITTEN AUTHORIZATION OF THE ARCHITECTURAL GROUP, INC.

DATE SIGNED
12.31.2024
REGISTRATION
EXPIRATION DATE

7999 GLADYS AVENUE - SUITE 101
BEAUMONT, TEXAS 77706
PHONE (409) 860-0197
FAX (409) 860-0199
WWW.LABICHE.COM

THE
LaBICHE
ARCHITECTURAL
GROUP, INC.

DISHWASH PROJECT ADMINISTRATION
SOUR LAKE ELEMENTARY
105E TR. 308
SOUR LAKE, TEXAS 77978
HARRIS JEFFERSON IBS

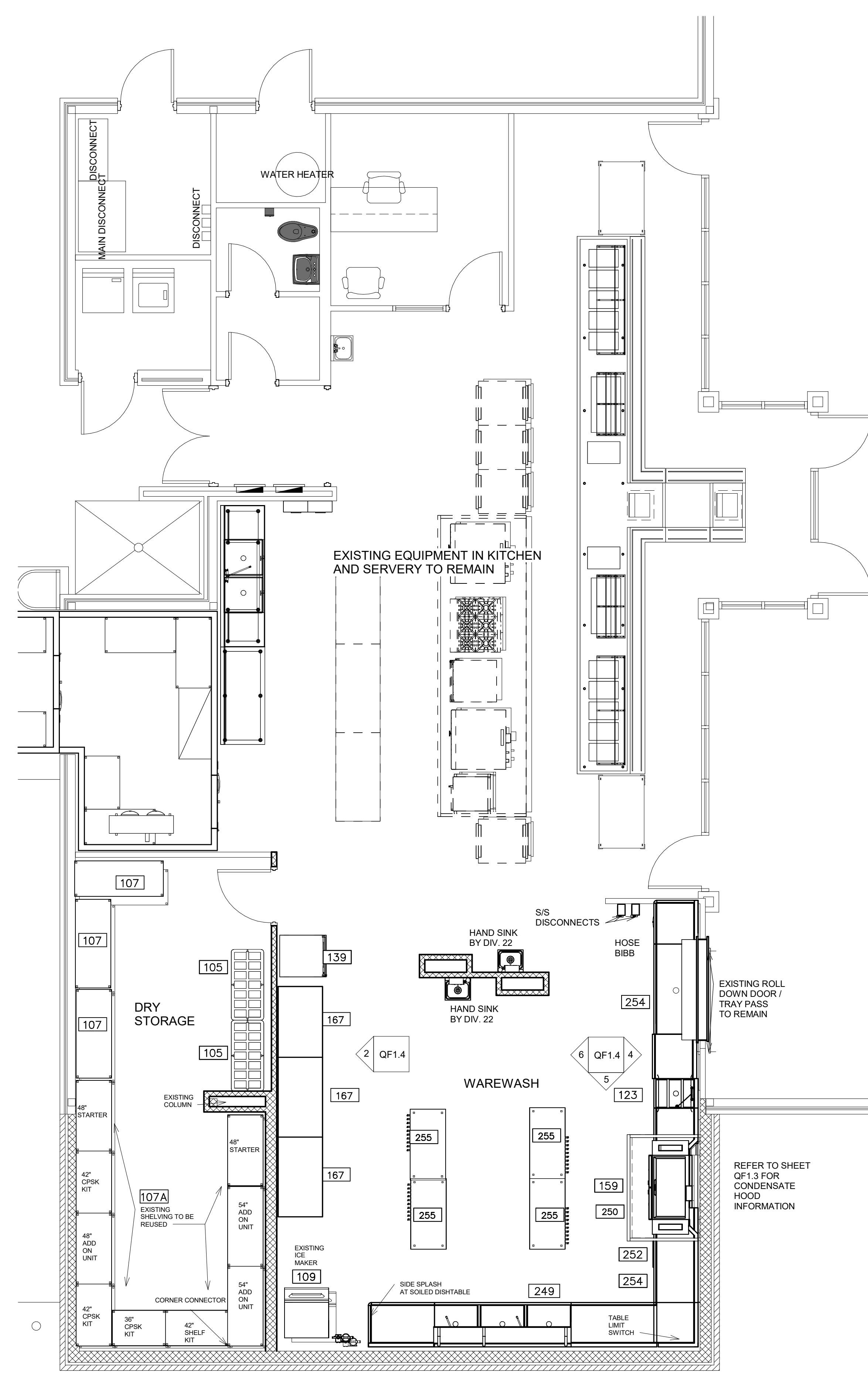
SET NO.

SHEET NUMBER
QF1.0
FS EQUIPMENT
PLAN
FILENAME

DRAWN BY
PROJECT NUMBER
2300005
DOCUMENT RELEASE DATES

1	20410205 - 75% CLIENT REVIEW
2	20410217 - 90% CLIENT REVIEW
3	20410231 - BIDS & CONSTRUCTION
4	
5	
6	
7	
8	
9	

COPYRIGHT © 2024
THE LABICHE ARCHITECTURAL
GROUP, INC.



1 FOOD SERVICE EQUIPMENT PLAN
1/4" = 1'-0"

FOOD SERVICE DRAWING INDEX

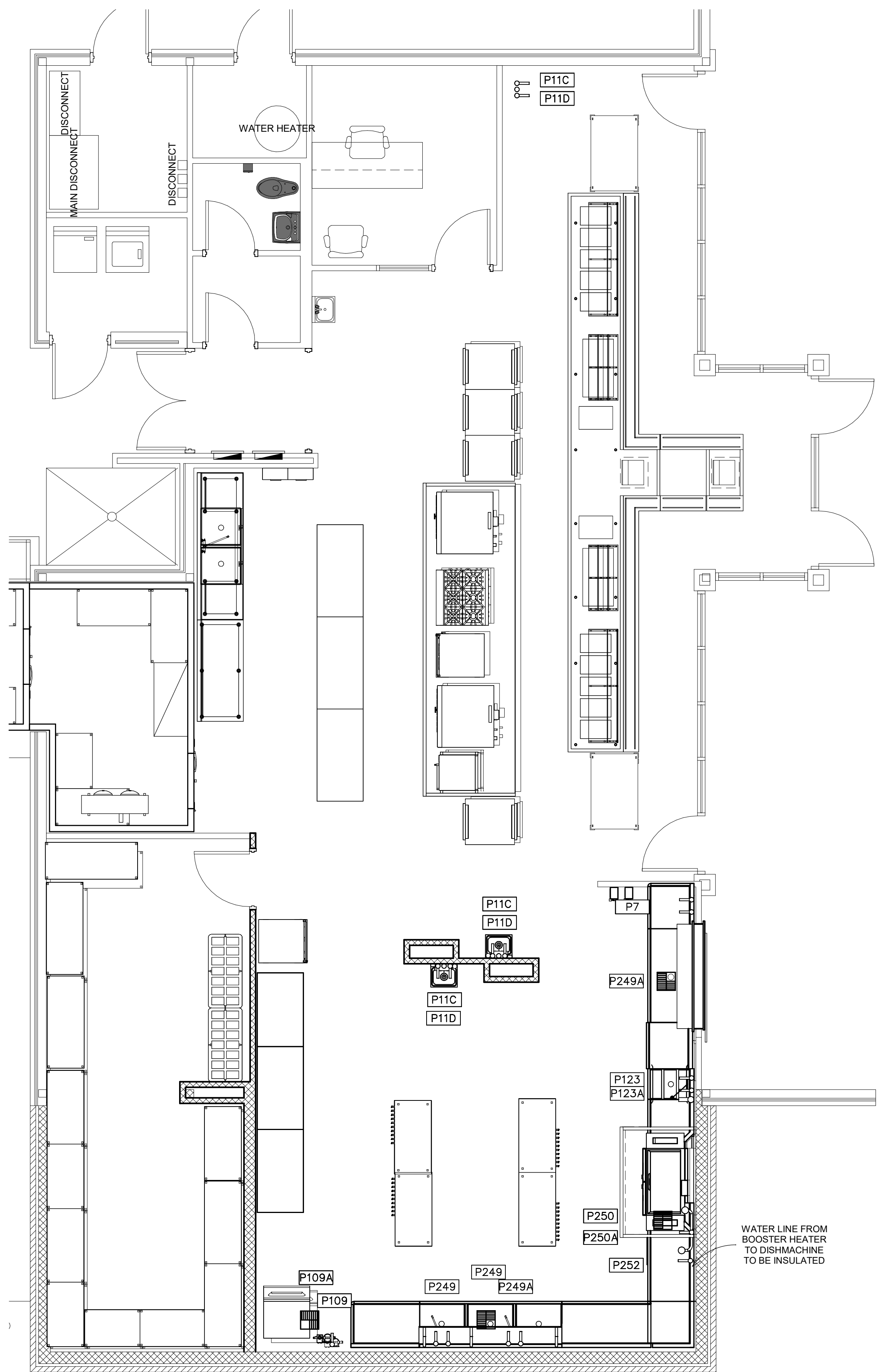
FDP SHEET NUMBER	FDP SHEET NAME
QF1	FS GENERAL COORDINATION NOTES
QF1.0	FS EQUIPMENT PLAN
QF1.1	FS PLUMBING PLAN
QF1.2	FS ELECTRICAL PLAN
QF1.3	FS CONDENSATE HOOD
QF1.4	FS ELEVATIONS, SECTIONS, & DETAILS

FOOD SERVICE EQUIPMENT SCHEDULE

REFER TO SHEET QF1 FOR GENERAL CONTRACTOR & HEALTH DEPARTMENT...

FDP ITEM	FDP QTY	FDP DESCRIPTION	FDP REMARKS
105	2	DUNNAGE RACK	
107	3	DRY STORAGE SHELVING - NEW	
107A	1	DRY STORAGE SHELVING - EXISTING	EXISTING - RELOCATE AND RECONFIGURE
109	1	ICE MACHINE W/ BIN	EXISTING - RELOCATE
123	1	DISPOSER - SINK MOUNT	
139	1	INSUL MOBILE PROOFER	EXISTING - RELOCATE
159	1	CONDENSATE HOOD	
167	3	MOBILE WORKTABLE	
249	1	THREE COMPARTMENT SINK	
250	1	DISHMACHINE WITH EXTERNAL BOOSTER	
252	1	BOOSTER HEATER	
254	2	SOILED & CLEAN DISHTABLE	
255	4	MOBILE DRYING RACK	





FOOD SERVICE PLUMBING SCHEDULE

REFER TO SHEET QF1 FOR PLUMBING COORDINATION NOTES

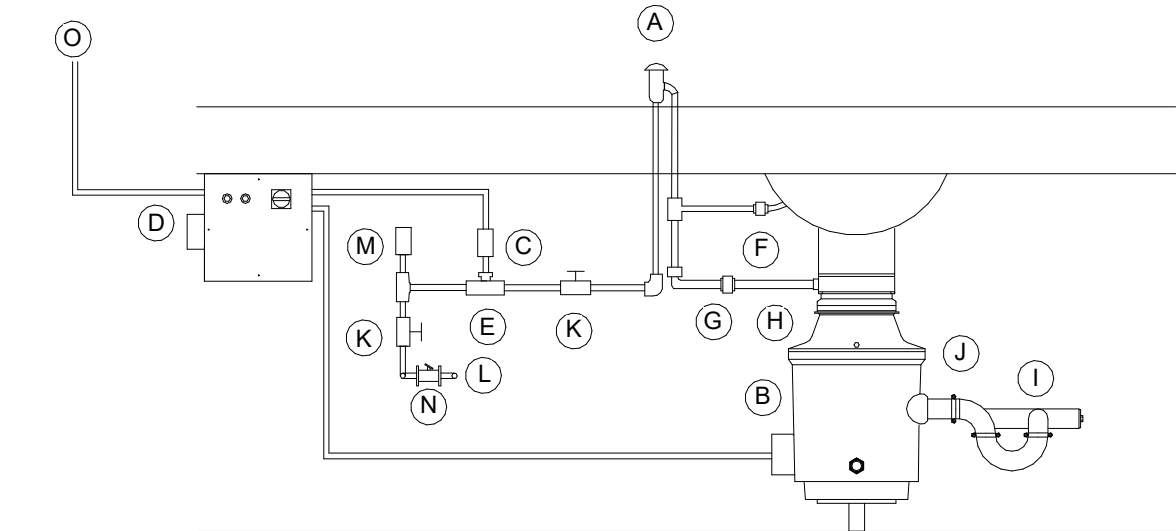
FDP PNO	FDP PSIZE	FDP PCONN	FDP PSERVICE TO	FDP PLOC	FDP PAFF	FDP PREMARKS
P7	3/4"	H & C WATER	HOSE BIBB	WALL	18"	<varies>
P11C	1/2"	H & C WATER	FAUCET	WALL	18"	BTC: RE: NOTE #3 FURNISHED & INSTALLED BY DIV. 22
P11D	1 1/2"	DIRECT DRAIN	HAND SINK	WALL	15"	FURNISHED & INSTALLED BY DIV. 22
P109	3/4"	COLD WATER	WATER/ ICE	WALL	60"	BTC
P109A	12" SQ.	FLOOR SINK	ICE MACHINE	FLOOR	0"	3/4 GRATE
P123	3/4"	H & C WATER	FAUCET / DISPOSER	WALL	13"	BTC
P123A	2"	DIRECT DRAIN	DISPOSER	WALL	10"	BTC
P249	3/4"	H & C WATER	FAUCET	WALL	13"	BTC
P249A	12" SQ.	FLOOR SINK	SINK	FLOOR	0"	THREE QUARTER GRATE
P250	12" SQ.	FLOOR SINK	DISHMACHINE	FLOOR	0"	BTC
P250A	3/4"	COLD WATER	DRAIN TEMPERING	WALL	18"	BTC
P252	3/4"	HOT WATER	BOOSTER HEATER	WALL	18"	EXT. THRU W.FILTER TO BOOSTER HEATER

○ HW	HOT WATER	□ FFD	FUNNEL FLOOR DRAIN
○ CW	COLD WATER	▬ EVC	EXHAUST VENT CONNECTION
○ HTW	180 F HOT WATER	▬ SVC	SUPPLY VENT CONNECTION
●	CHILLED WATER	● FR	DIRECT-CONNECTED FLUE RISER
● W	DIRECT WASTE	● PS	PIPE SLEEVE
○ IW	INDIRECT WASTE	○	COMPRESSED AIR
○	GAS SUPPLY	◆	CO2
●	STEAM SUPPLY	▲ AFF	ABOVE FINISHED FLOOR
○ CR	CONDENSATE RETURN	● BTC	BRANCH TO CONN. ON EQUIP
● DR	DRAIN	● DFA	DROP FROM ABOVE
□ FD	FLOOR DRAIN	● CLG	CEILING
■ FST	FLOOR SINK 3/4 GRATE		
■ FSH	FLOOR SINK 3/4 GRATE		

2 PLUMBING SYMBOLS NOT TO SCALE

SECTION 11 40 00 TO PROVIDE LOOSE WITH FOOD SERVICE EQUIPMENT. INSTALLATION BY DIV. 22 & 26.

- (A) VACUUM BREAKER
 - (B) DISPOSER
 - (C) TIME DELAY
 - (D) CONTROL PANEL
 - (E) SOLENOID VALVE
- DIVISION 22 TO PROVIDE AND INSTALL
- (F) 1/2" CW INLET
 - (G) FLOW CONTROL
 - (H) 1/2" CW
 - (I) 2" DRAIN LINE WITH P-TRAP & Y ADAPTOR
 - (J) 1-1/2" TAILPIECE
 - (K) GATE VALVE
 - (L) 1/2" CW SUPPLY
 - (M) SHOCK STOP
 - (N) RPZ BACK FLOW PREVENTOR
- DIVISION 26 TO PROVIDE AND INSTALL
- (O) POWER SUPPLY



3 DISPOSER WITH VACUUM BREAKER DETAIL NOT TO SCALE

1 FOOD SERVICE PLUMBING PLAN
1/4" = 1'-0"

7989 GLADYS AVENUE - SUITE 01
 BEAUMONT, TEXAS 77706
 PHONE (409) 860-0197
 FAX (409) 860-0199
 WWW.LABICHE.COM

THE
 LaBICHE
 ARCHITECTURAL
 GROUP, INC.

DISHWASH PROJECT REVISION HISTORY
 SOUR LAKE ELEMENTARY
 1006 TR. 368
 SOUR LAKE, TEXAS 77478
 HARRIS JEFFERSON IBD

SET NO.

SHEET NUMBER
 QF1.1
 FS PLUMBING
 PLAN
 FILENAME

DRAWN BY: [Signature]

PROJECT NUMBER: 2303005

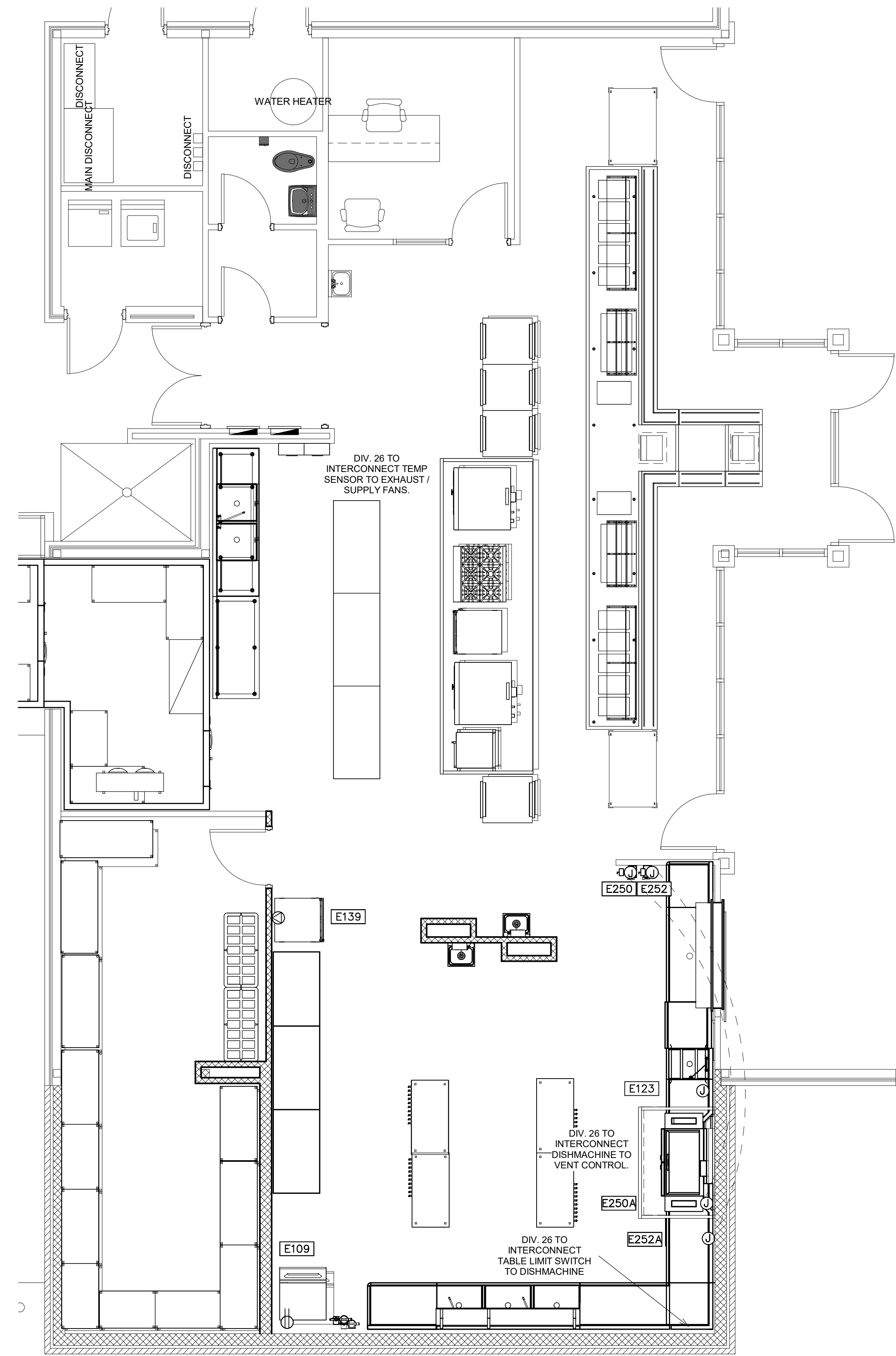
DOCUMENT RELEASE DATES:

1	20410208 - 75% CLIENT REVIEW
2	20410217 - 90% CLIENT REVIEW
3	20410231 - BIDS & CONSTRUCTION
4	
5	
6	
7	
8	
9	



THIS DOCUMENT, AND THE IDEAS AND DESIGN INCORPORATED HEREIN, AS AN INSTRUMENT OF PROFESSIONAL SERVICE IS THE PROPERTY OF THE ARCHITECT AND IS NOT TO BE USED IN WHOLE OR IN PART FOR ANY OTHER PROJECT, WITHOUT THE WRITTEN AUTHORIZATION OF THE LABICHE ARCHITECTURAL GROUP, INC.

DATE SIGNED
12.31.2024
REGISTRATION
EXPIRATION DATE



FOOD SERVICE ELECTRICAL SCHEDULE								
REFER TO SHEET QF1 FOR ELECTRICAL COORDINATION NOTES								
FDP ENO	FDP ECONN	FDP ELOAD	FDP EVOLT	FDP EPH	FDP ESERVICE TO	FDP ELOC	FDP EAFF	FDP EREMARKS
E109	DR	11.9A	120	1	ICE MACHINE	WALL 60"	---	
E123	JB	3.0HP	208	3	DISPOSER	WALL 24"	---	BTC - CONNECT THRU C.P. TO DISPOSER
E139	SR	16.6A	120	1	INSUL. MOBILE PROOFER	WALL 47"	--	
E250	JB/DS	24.5A	480	3	DISHMACHINE	WALL 54"	---	BTC; INTERCONNECT TO E250A
E250A	JB	---	---	---	DISHMACHINE	WALL 68"	---	BTC; INTERCONNECT FROM E250
E252	JB/DS	27.2A	480	3	BOOSTER HEATER	WALL 54"	---	BTC; INTERCONNECT TO E252A
E252A	JB	---	---	---	BOOSTER HEATER	WALL 24"	---	BTC; INTERCONNECT FROM E252

SCR	CONDUIT STUB BTC ON RECEPT FURNISH WITH EQUIPMENT	CC	CONDUIT FOR COMPUTER CABLES
CS	CONDUIT STUB UP/OUT FOR DIRECT CONNECTION	BTC	BRANCH TO CONNECTION ON EQUIPMENT
DR	DUPLEX RECEPTACLE	WPR	WATERPROOF RECEPTACLE (SPRING COVER)
SR	SINGLE PURPOSE RECEPTACLE-1PH	FPB	FIRE PROTECTION BUZZER
SR	SINGLE PURPOSE RECEPTACLE-3PH	BSC	BEVERAGE SYSTEM CONDUIT
FR	FLUSH FLOOR RECEPTACLE	DFA	DROP FROM ABOVE
PMR	PEDESTAL MOUNTED RECEPTACLE	AFF	ABOVE FINISH FLOOR
DCR	DROP CORD RECEPTACLE	CS/JB	JUNCTION BOX ON PEDESTAL
JB	JUNCTION BOX ON CEILING	SW	SWITCH
JB	JUNCTION BOX IN WALL	D	DATA
JB/DS	JUNCTION BOX WITH DISCONNECT BY DIV.26		

2 ELECTRICAL SYMBOLS NOT TO SCALE

1 FOOD SERVICE ELECTRICAL PLAN
1/4" = 1'-0"

7999 GLADYS AVENUE - SUITE 101
BEAUMONT, TEXAS 77706
PHONE (409) 860-0197
FAX (409) 860-0199
WWW.LABICHE.COM

THE
LABICHE
ARCHITECTURAL
GROUP, INC.

DISHWASH PROOFER REVISION
SOUR LAKE ELEMENTARY
1005 TR. 306
SOUR LAKE, TEXAS 77988
HARRIS JEFFERSON ISB

SET NO.

SHEET NUMBER
QF1.2
FS ELECTRICAL
PLAN
FILENAME

NO.	DATE	DESCRIPTION
1	2024.12.05	100% CLIENT REVIEW
2	2024.12.17	90% CLIENT REVIEW
3	2024.12.31	BIDS & CONSTRUCTION
4		
5		
6		
7		
8		
9		



COPYRIGHT © 2024
THE LABICHE ARCHITECTURAL
GROUP, INC.

THIS DOCUMENT, AND THE IDEAS AND DESIGN INCORPORATED HEREIN, AS AN INSTRUMENT OF PROFESSIONAL SERVICE IS THE PROPERTY OF THE ARCHITECT AND IS NOT TO BE USED IN WHOLE OR IN PART FOR ANY OTHER PROJECT, WITHOUT THE WRITTEN AUTHORIZATION OF THE LABICHE ARCHITECTURAL GROUP, INC.

DATE SIGNED
12.31.2024
REGISTRATION
EXPIRATION DATE

7999 GLADYS AVENUE - SUITE 101
BEAUMONT, TEXAS 77706
PHONE (409) 860-0187
FAX (409) 860-0189
WWW.LABICHE.COM

THE
LaBICHE
ARCHITECTURAL
GROUP, INC.

DISHWASH PROPERLY
SOUR LAKE ELEMENTARY
1066 TX 386
SOUR LAKE, TEXAS 77889
HARDIN JEFFERSON IBD

SET NO.

SHEET NUMBER
QF1.3
FS
CONDENSATE
HOOD
FILENAME

DRAWN BY	
PROJECT NUMBER	
230005	
DOCUMENT RELEASE DATES	
1	241123-70% CLIENT REVIEW
2	241217-90% CLIENT REVIEW
3	241231-BIDS & CONSTRUCTION
4	
5	
6	
7	
8	
9	

COPYRIGHT © 2024
THE LABICHE ARCHITECTURAL
GROUP, INC.



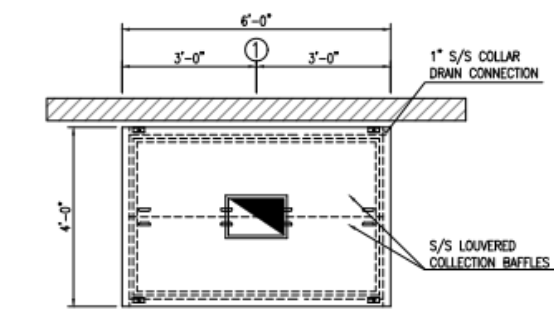
**HARDIN JEFFERSON ISD-
SOUR LAKE ELEMENTARY**
FDP

THIS DRAWING IS THE PROPERTY OF MOD-U-SERVE
AND CAN BE REPRODUCED ONLY BY PERMISSION,
IN WHICH CASE, ALL DRAWINGS MUST BEAR
THE NAME MOD-U-SERVE.

**COMMERCIAL
KITCHENS
INC.**

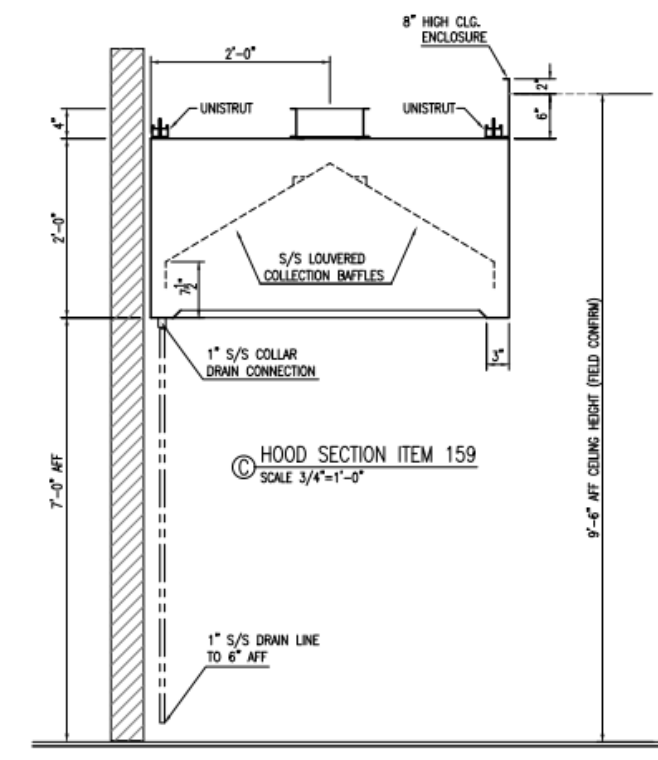
2309 PEYTON ROAD
HOUSTON, TEXAS 77032
281 442 8001

NO.	DATE	DESCRIPTION	BY
152	11.13.24	152 in existing, removed from scope	ADC
SHEET 1 OF 1			



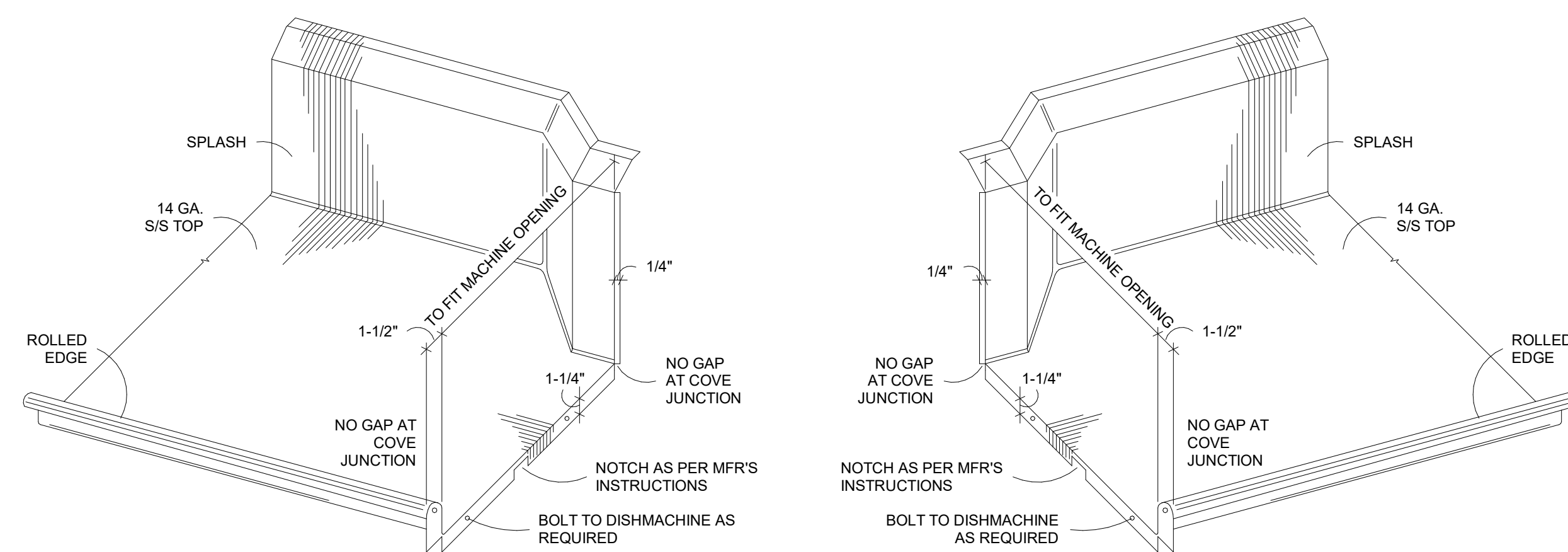
HOOD WGT. - 390 LBS
PLAN - MODEL CH - ITEM 159
SCALE 1/4\"/>

NO.	SIZE	CFM/FOOT	CFM EACH	FFM	S.P.
1	10\"/>				

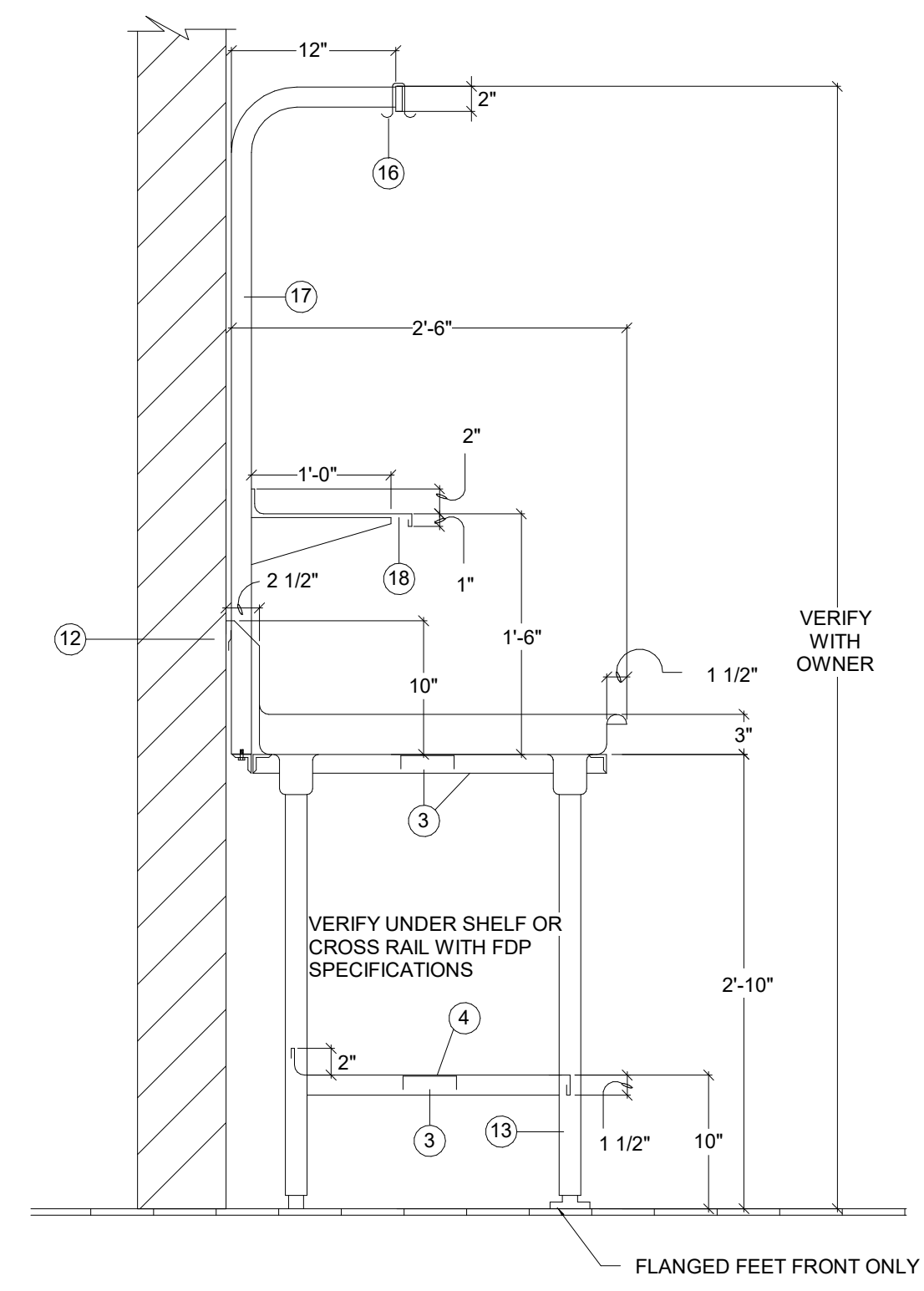


HOOD SECTION ITEM 159
SCALE 1/4\"/>

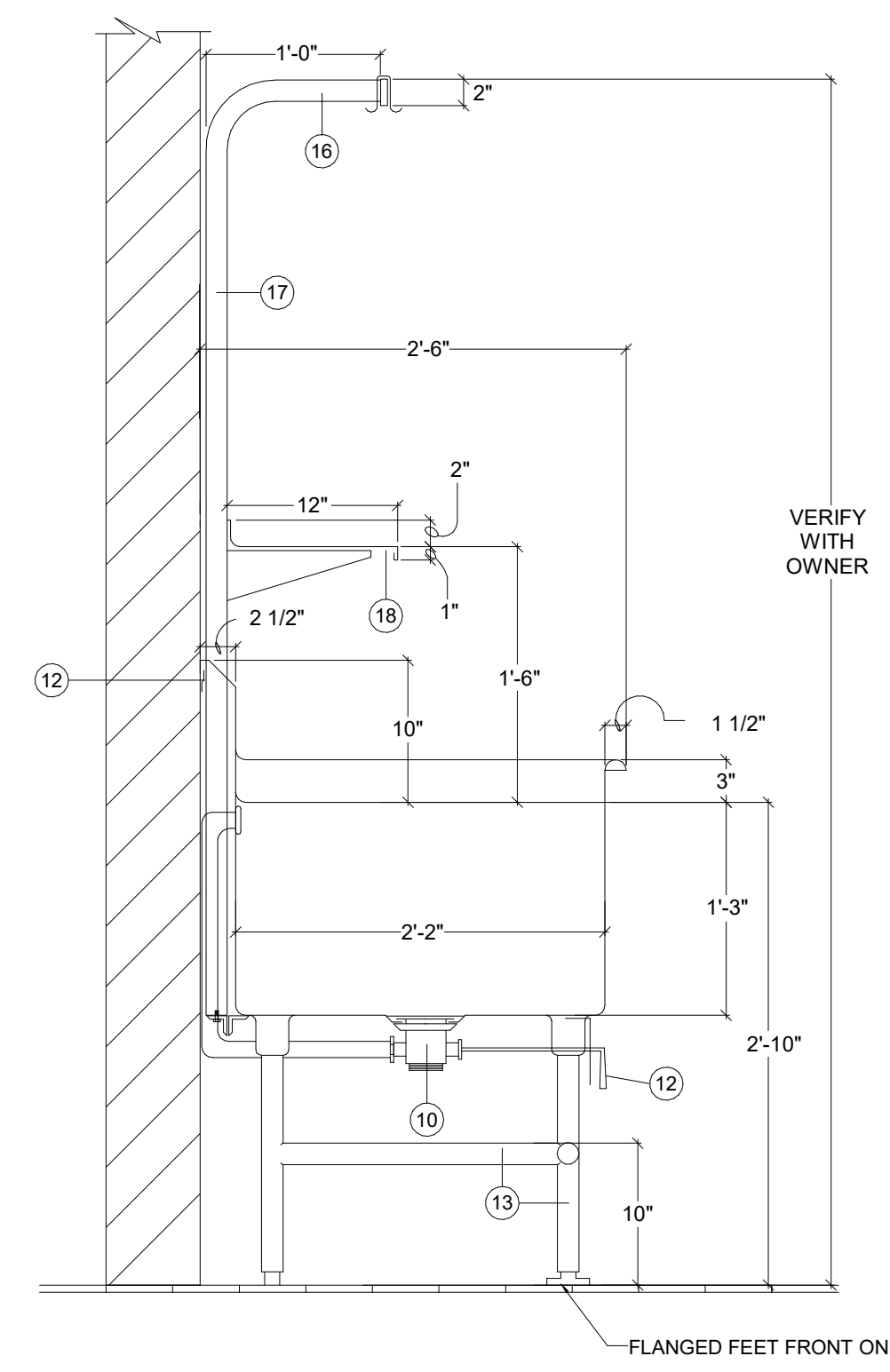




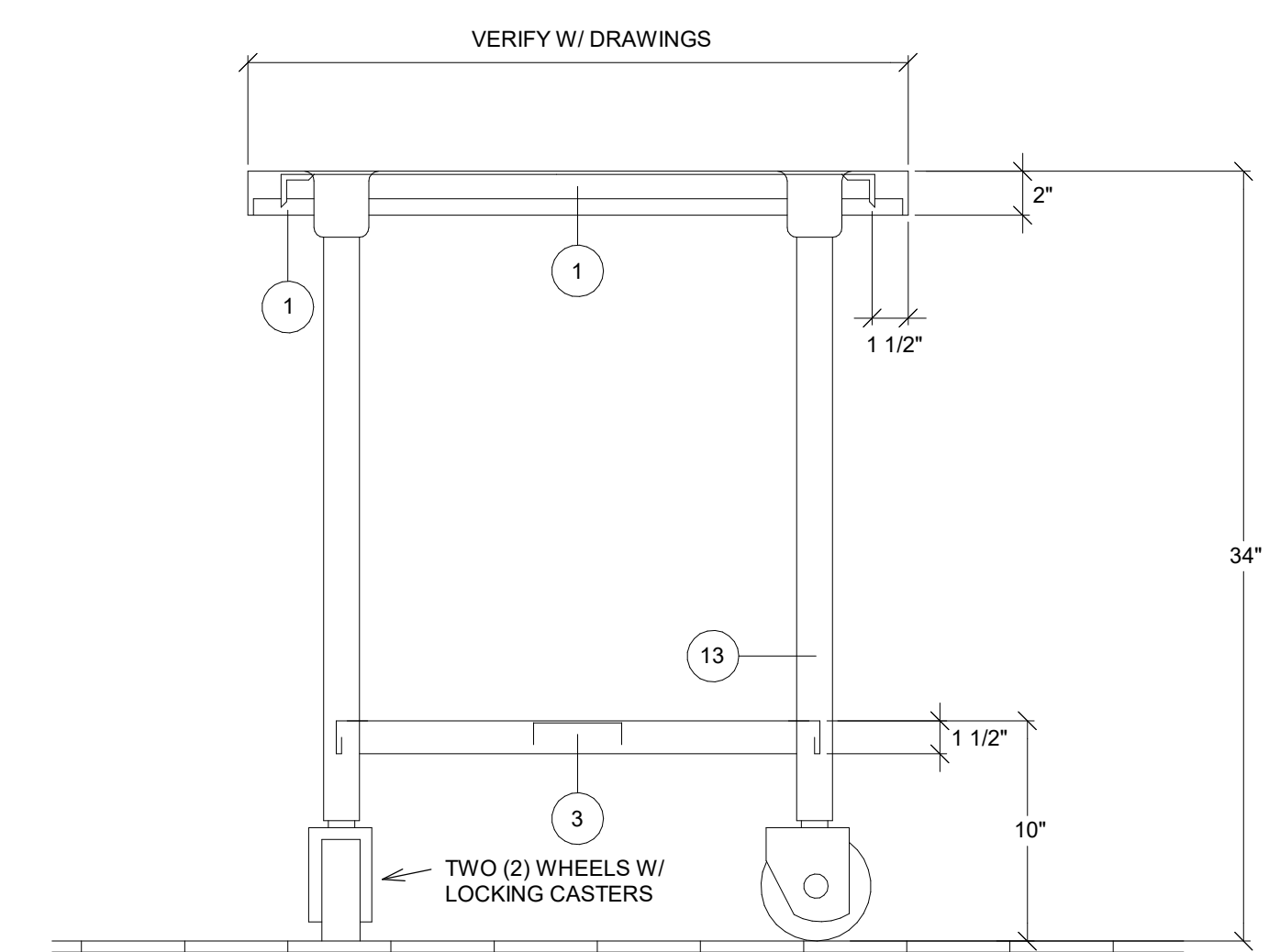
10 DISHTABLE - SOILED & CLEAN CONNECTION DETAIL
 NOT TO SCALE



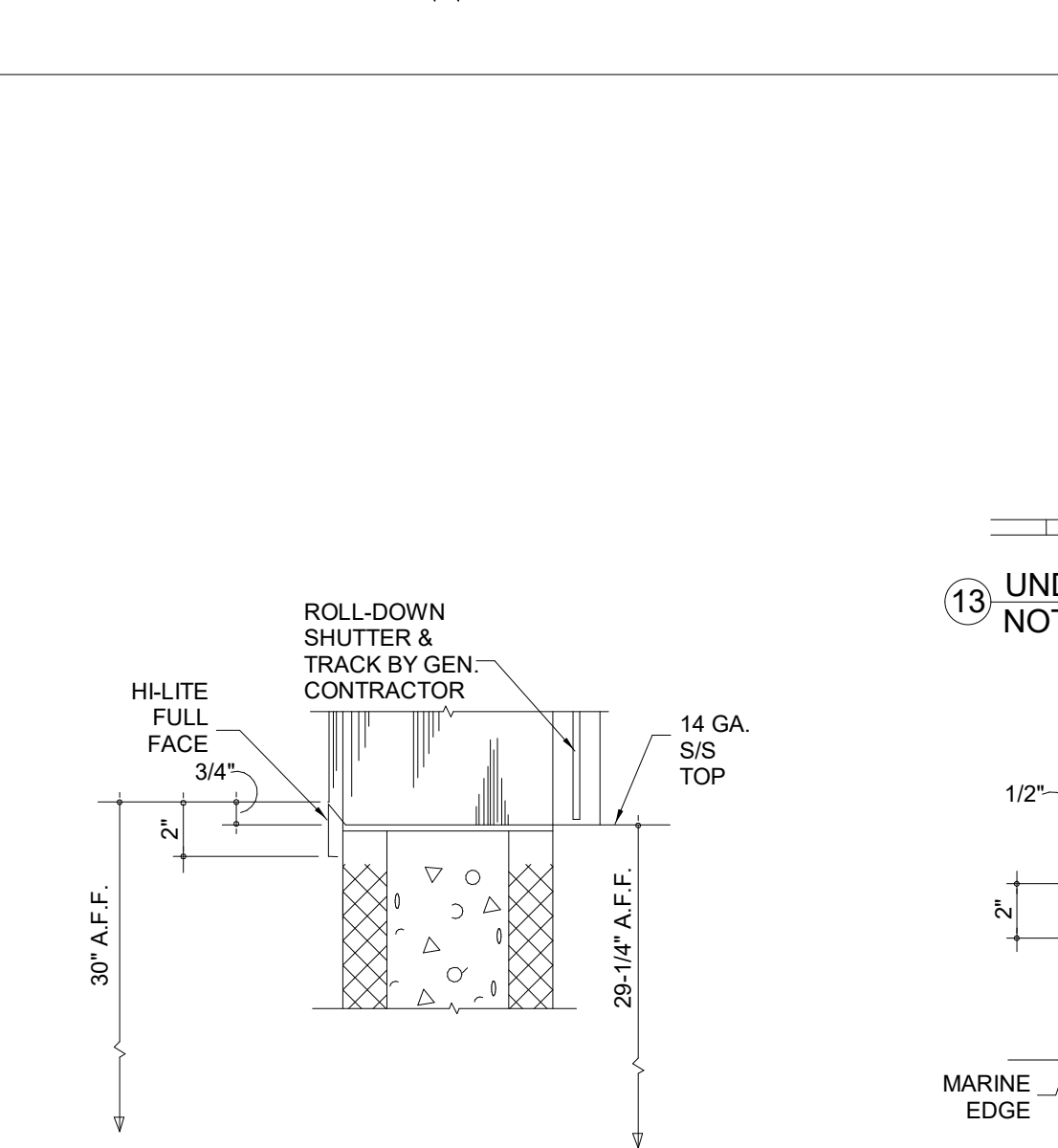
7 DRAINBOARD - UTENSIL WASH SECTION
 NOT TO SCALE



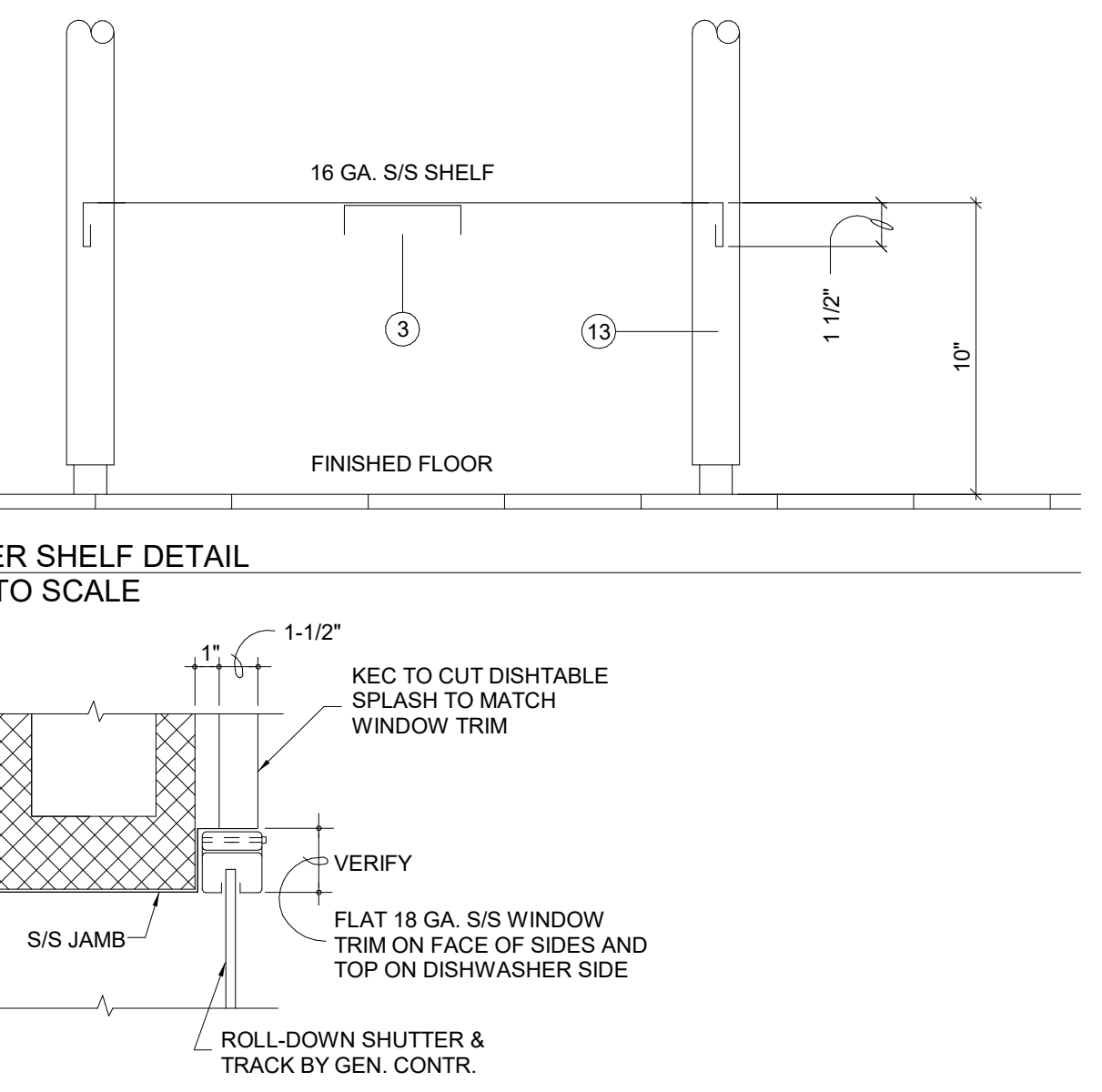
8 SINK - UTENSIL WASH SECTION
 NOT TO SCALE



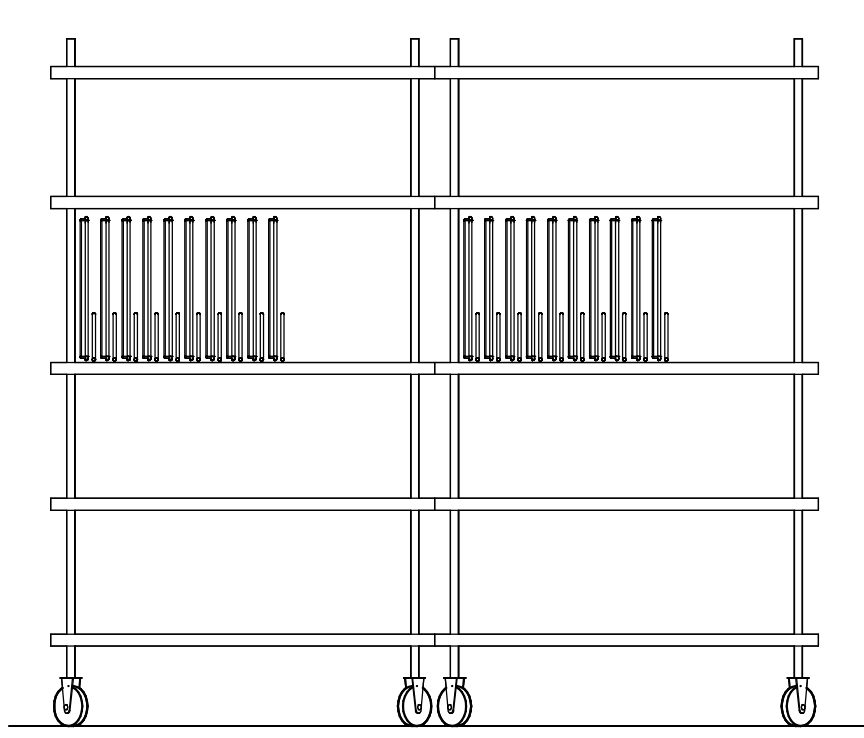
9 WORKTABLE - MOBILE SECTION
 NOT TO SCALE



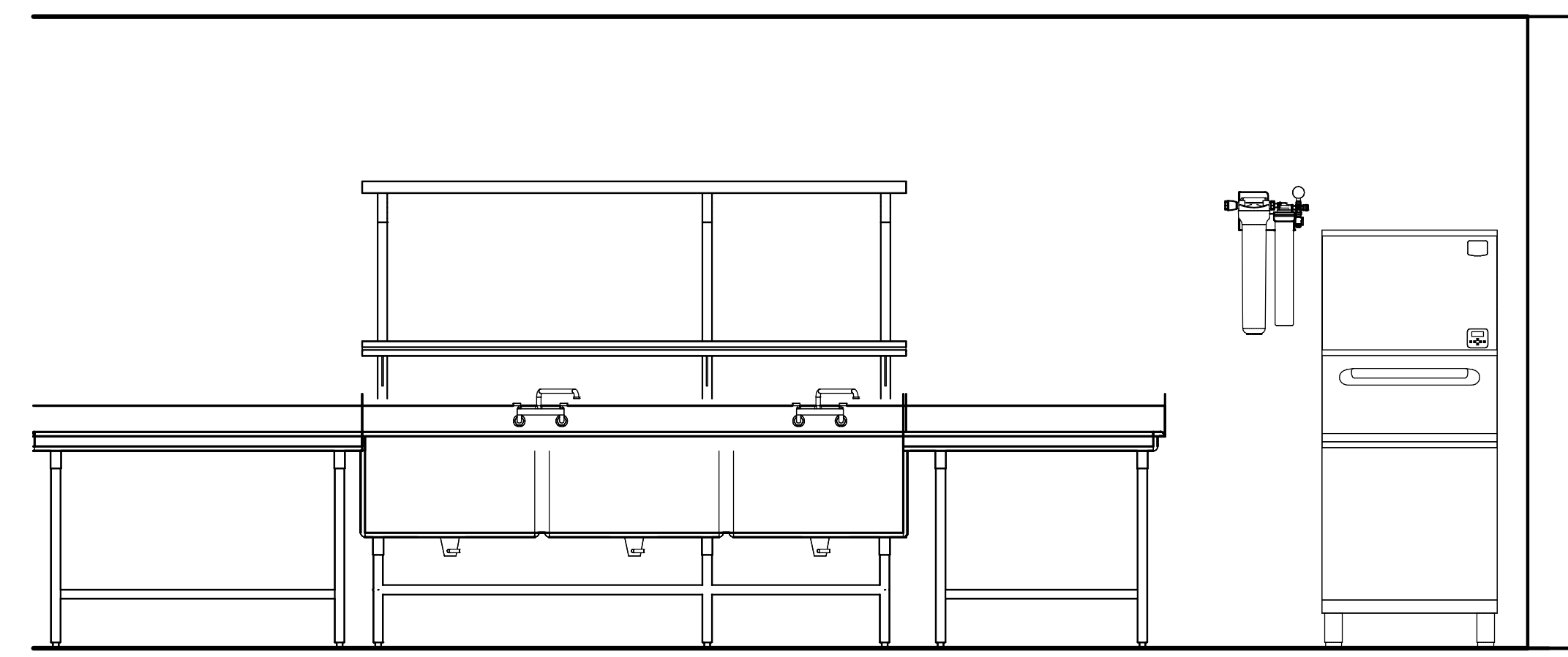
11 WAREWASH - TRAY DROP SECTION
 NOT TO SCALE



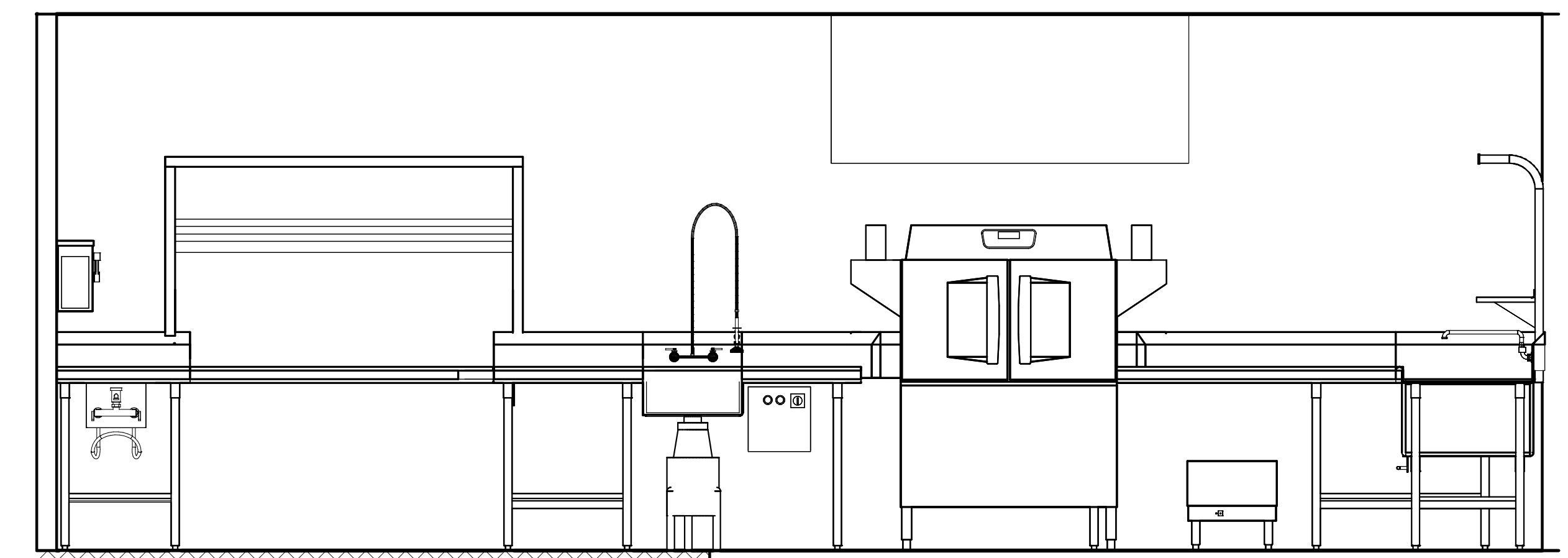
12 WAREWASH - TRAY DROP WINDOW SECTION
 NOT TO SCALE



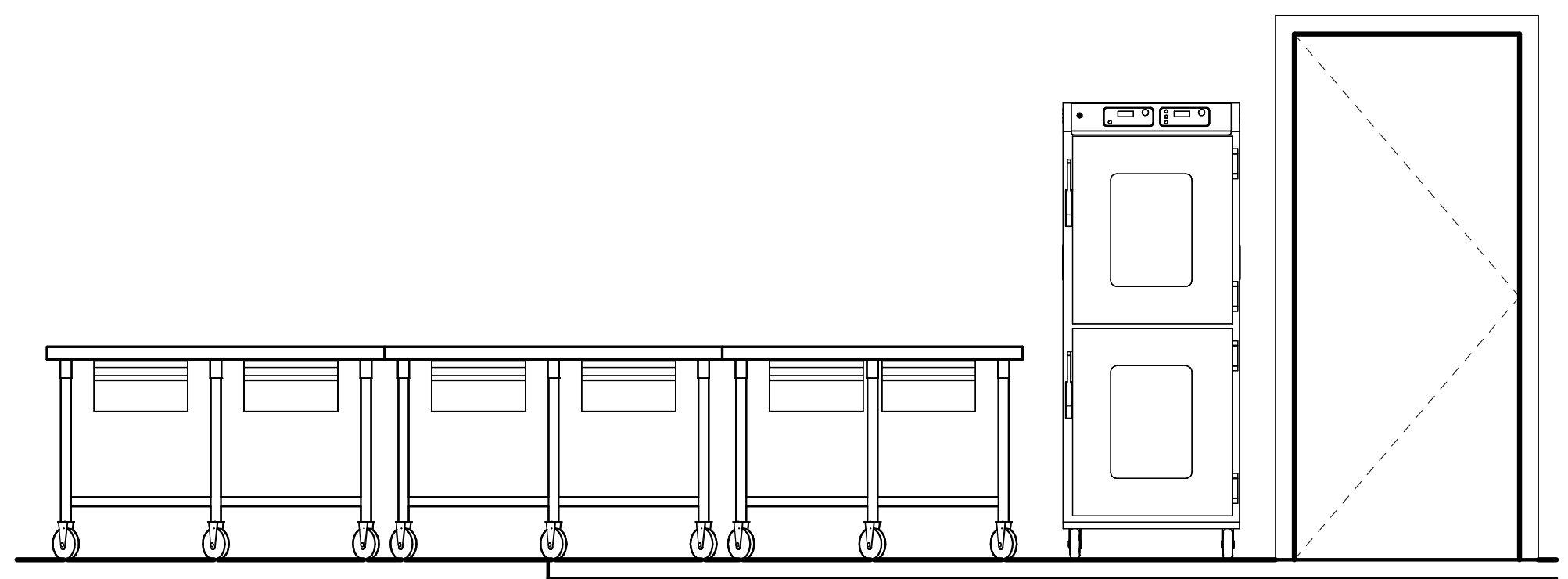
6 UTENSIL RACKS
 1/2" = 1'-0"



5 UTENSIL WASH
 1/2" = 1'-0"



4 WAREWASH
 1/2" = 1'-0"



2 NEW MOBILE WORKTABLES
 1/2" = 1'-0"